

Flash Lesson 4(D)-Introducing Flash Components-forms (user input)

Overview:

-Using components window-Listbox example-properties-changing width,-Combo Box example
Radio Button, Check Box, How to Change Components Properties-Skins

-Class Project Google Search: Text Field and Push Button

-Get My URL

-Password Protect Page

Lets Begin: Components are kind of like re-usable movie clips that Flash has made with Actionscript, made to be completely accessible and very easy to use, preventing the user or designer to have to make these by hand with the script. They are used with forms, questionnaires, and many things both online and off. In this exercise we will learn how to design the front end of a form. Back end /connect to CGI can be learned in another class.

Open a new file. Make up a general scheme and design you want your form to have including the types of questions. You can make all of this in the first layer, first keyframe. Open the Components Toolbox under the Window option in the main menu. Simply drag an instance of each component you see onto the stage in the appropriate place, next to your questions. See the pictures offered in this example.

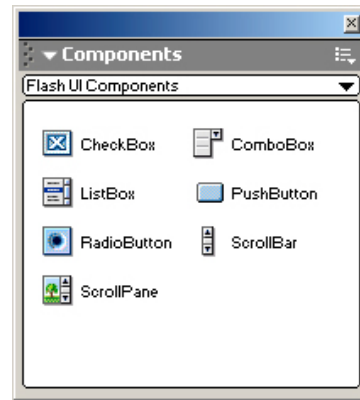
flash form example

1. Radio Button:
what is your gender? Female
 Male

2. List Box:
what are you interested in?
Flash
Dreamweaver
Flash
Javascript

3. Combo Box:
Describe Yourself: Professional

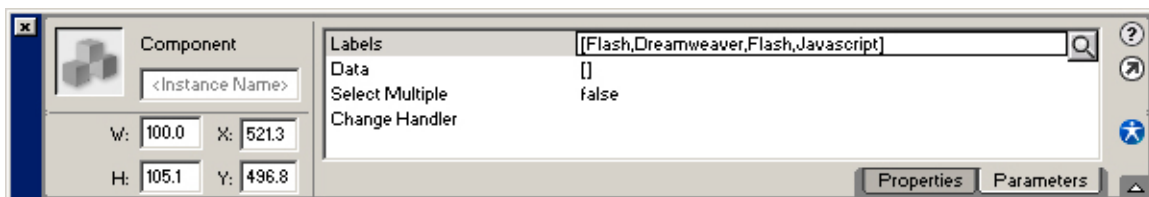
4. Check Box:
Newsletter: Yes, sent it!
Submit This Form



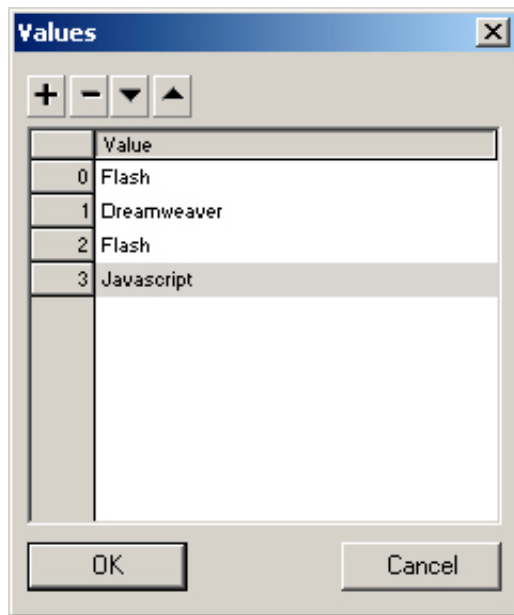
Example 1, what we are trying to accomplish

Components Tool box

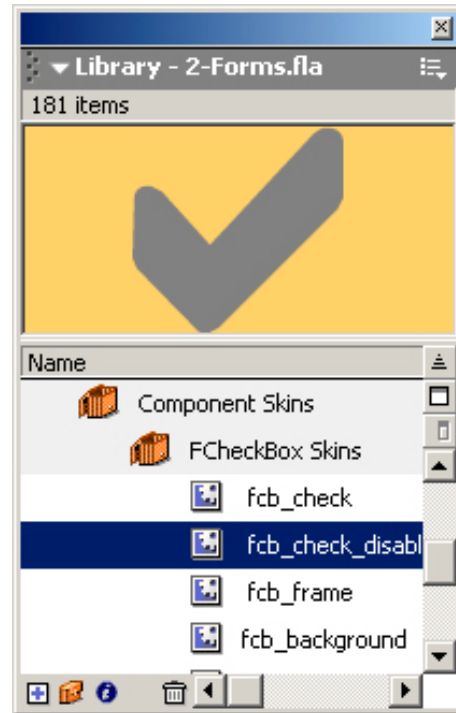
With each component separately selected on the stage...notice the properties/parameters options offered in the Properties box. Click on the Parameters tab. Here the values can be set for each component by typing them in. You can do this inside the properties box directly or open up the Value box by finding the little magnifying glass on the right side of the line, or click anywhere on the line itself. See below.



The Value box is easy to use. Click on the “+” to add a value. Type in your value, continue until you are done, adding as many as you need. The arrows will allow you to move each item up or down changing their order. Click on ok.



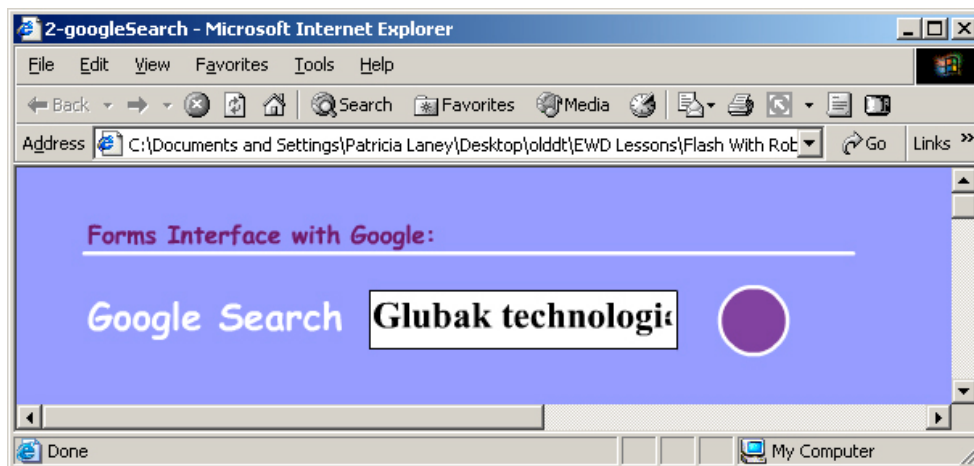
Values Box for Component Parameters



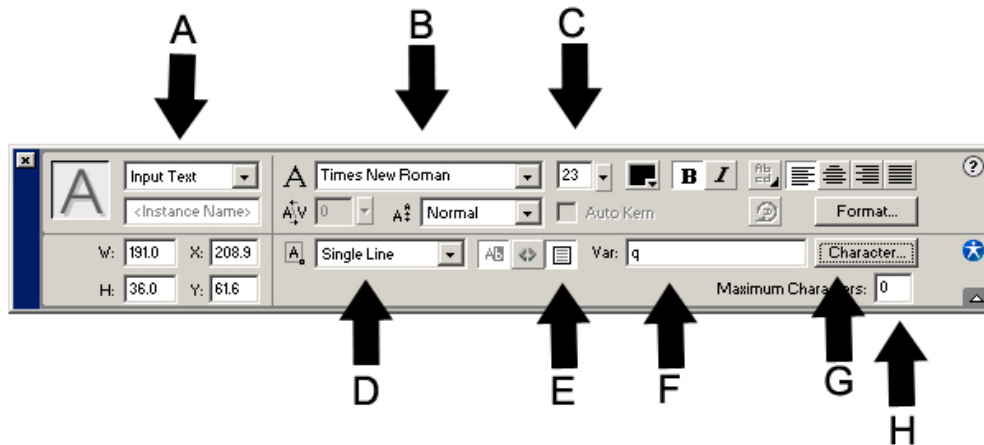
Component Skins Library

The text and color of the components cannot be changed unless you go into the Library, find the Component Skins option and choose the one you would like to change. By changing it once, you will change the style of all components in your form.

Class Project Google Search – Input Text Field and Submit Button



This is an example of a simple form that interfaces with another website, for example Google. So the user will be taken outside of the Flash interface and interact with the Google website. This example can be tricky for the first time. To begin, Make the simple things, the text, stage color, any other visual embellishments you may need. Next, we will create the text field. Click on the text tool and click on the stage until a white box pops up. It will be prompting you to type something inside. Do not type anything inside. Instead go down to the Properties box (See Image below) and next to the big text icon you will see a box with some options (static text,dynamic and input) [A] Change this to input. [B] choose the font you want your input text field to have and [C] choose the size of the font and [D] Choose the Line Type option to Single Line and [E] Click on the Show Border Around Text (this option will make your white box permanent) [F] In the Var or Variable option type in the letter "Q" [G] Click on the character box and choose the option Embed all characters (this will help the text have smoother appearance)



The Script Side of this Lesson – To be continued...

```

on (press) {
    getURL("http://www.google.com/search", "new", "GET");
}
on (keyPress "<Enter>") {
    getURL("http://www.google.com/search", "new", "GET");
}

```